



## VICTORIAN NOTICE TO MARINERS

The following Notice to Mariners is published for general information

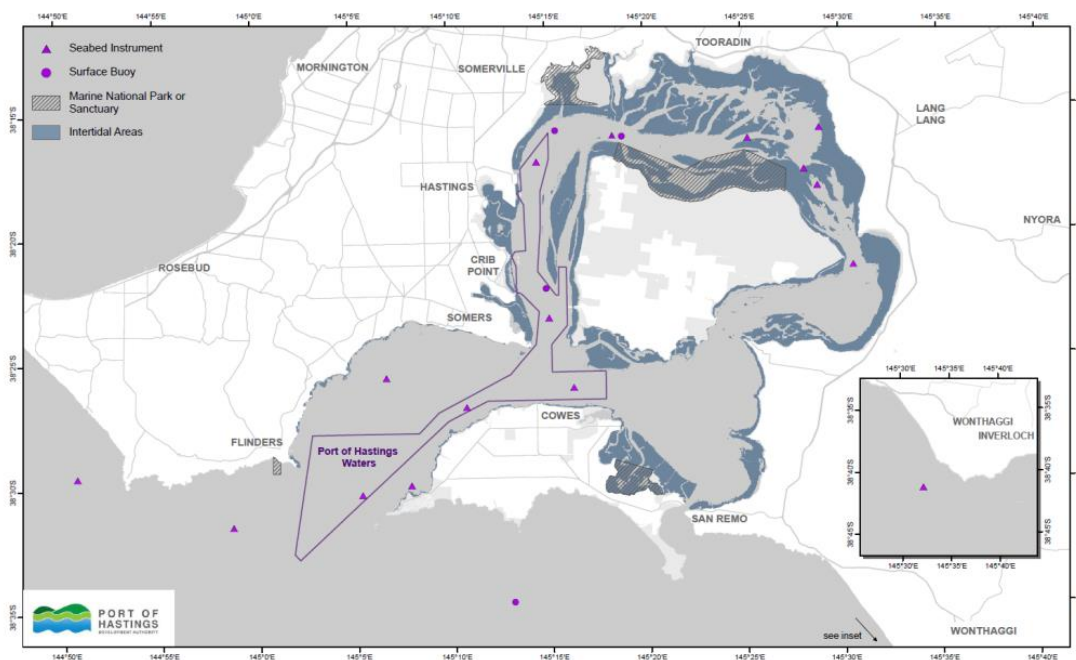
**Port of Hastings 23<sup>rd</sup> October 2014**

**Marine Site Investigations - Western Port**

**NTM 184 (T) 2014**

**Details;** Marine site investigations will be undertaken by the Port of Hastings Development Authority in and around Western Port for an initial period of 12 months. Timing of the investigations may be updated based on the results of the monitoring program. A map and a table showing the locations of marine instruments is included below. Various vessels will be used to deploy & service this equipment.

Further information can be found on the Port of Hastings Development Authority's website: [www.portofhastings.com](http://www.portofhastings.com)



**Port of Hastings Development Authority - Marine Site Investigations**  
**Proposed Insitu MetOcean and Water Quality Measurement Locations**

21/10/2014

Site ID's	Target Co - Ordinates (Lat/Long)		Approx. Depth (cd - m)	Mounting Type
	Longitude	Latitude		
WPO 4	144.8460	-38.4926	40	Seabed
WPO 3	144.9782	-38.5269	42.5	Seabed
WPO 1	145.5367	-38.6877	40	Seabed
WE 2	145.1309	-38.5009	6.4	Seabed
WE 3	145.1110	-38.4288	6.5	Seabed
WE 4	145.1791	-38.4491	28.4	Seabed
R 1	145.2709	-38.4369	17.2	Seabed
C 2	145.5104	-38.3570	8.6	Seabed
C 3	145.4809	-38.3038	2	Seabed with marker buoy
LNA 1	145.2507	-38.3902	22.2	Seabed
LNA 2	145.2483	-38.3703	12.7	Buoy
LNA 6	145.2580	-38.2647	9.5	Buoy
UNA 1	145.3150	-38.2692	22	Seabed and buoy
UNA 3	145.4218	-38.2714	6	Seabed
UNA 4	145.4828	-38.2652	1	Seabed with marker buoy
UNA 5	145.4695	-38.2927	2	Seabed with marker buoy
WER 1	145.0889	-38.5069	22.7	Seabed

**Further Notice; This notice is self cancelling.**

**Capt Shane Vedamuttu.**  
**Harbour Master – Western Port**