

VICTORIAN NOTICE TO MARINERS

The following Notice to Mariners is published for general information

Port of Hastings 18 December 2014

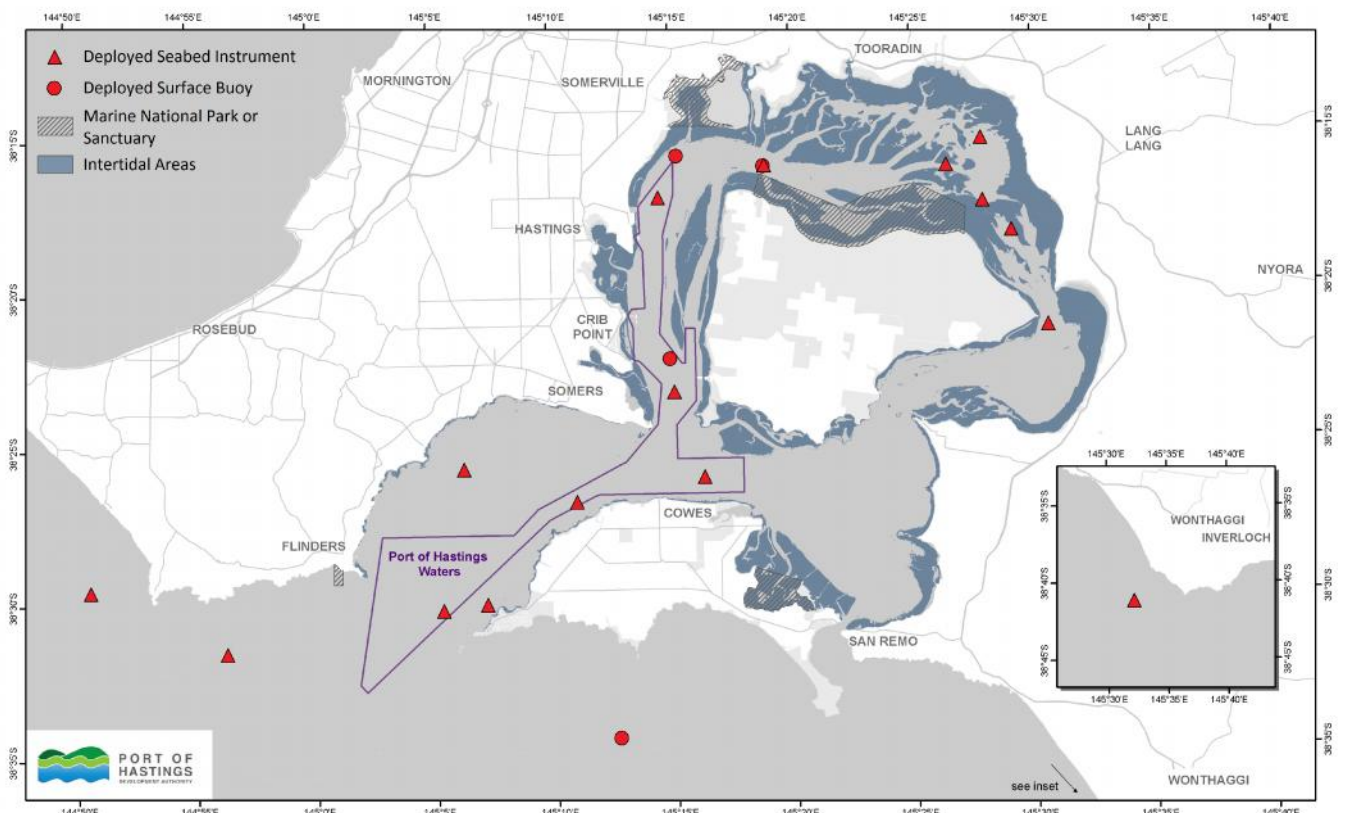
Marine Site Investigations: Western Port

NTM 220 (T) - 2014

Details; Marine site investigations are being undertaken by the Port of Hastings Development Authority in and around Western Port for an initial period of 12 months. Timing of the investigations may be updated based on the results of the monitoring program. A map and table showing the locations of marine instruments is included below. Various vessels will be used to service equipment as needed.

This Notice supersedes NTM 184 (T) - 2014, which is hereby cancelled.

Further information may be found on the Port of Hastings Development Authority's website: www.portofhastings.com



Port of Hastings Development Authority – Marine Site Investigations Insitu Metocean and Water Quality Measurement Locations				18/12/2014
Site ID's	Deployed Co-ordinates (Lat/Long)		Approximate Depth	Mounting Type
	Longitude	Latitude	(cd - m)	
WPO 1	145°32.19	-38°41.27	37	Seabed
WPO 2	145°12.65	-38°34.60	70	Wave rider buoy
WPO 3	144°56.28	-38°31.69	36	Seabed
WPO 4	144°50.66	-38°29.62	38	Seabed
WE 2	145°7.16	-38°30.27	10	Seabed
WE 3	145°6.26	-38°25.85	9.5	Seabed
WE 4	145°10.96	-38°26.98	20	Seabed
R 1	145°16.25	-38°26.22	17	Seabed
C 2	145°30.61	-38°21.43	8.5	Seabed
C 3	145°29.16	-38°18.36	3	Seabed with surface buoy
LNA 1	145°15.06	-38°23.42	21	Seabed
LNA 2	145°14.90	-38°22.34	14	Surface buoy
LNA 5	145°14.47	-38°17.16	13	Seabed
LNA 6	145°15.48	-38°15.88	9	Surface buoy
UNA 1	145°18.92	-38°16.15	22	Seabed and surface buoy
UNA 3	145°26.47	-38°16.23	11	Seabed
UNA 4	145°27.89	-38°15.35	2.5	Seabed with surface buoy
UNA 5	145°27.98	-38°17.4	2.7	Seabed with surface buoy
WER 1	145°5.33	-38°30.41	22	Seabed

Further Notice; This notice is self-cancelling



**Capt Shane Vedamuttu.
Harbour Master – Western Port**